

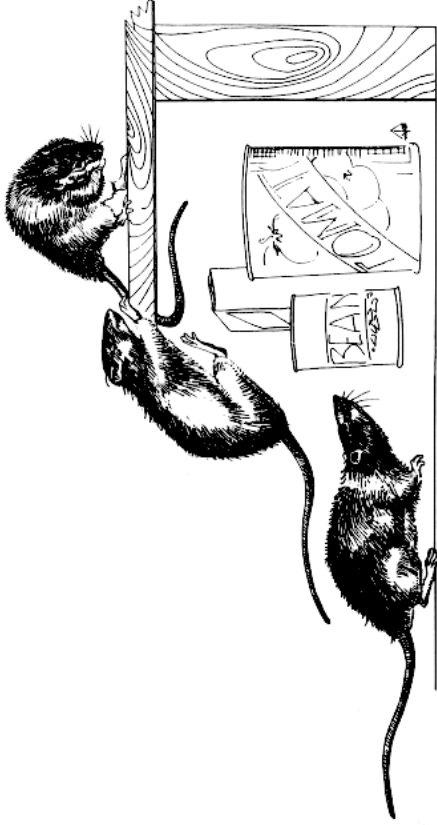
Lexington-Fayette County  
Health Department

333 Waller Avenue, 4th Floor  
Lexington, KY 40504  
(606) 231-9791

DIVISION OF ENVIRONMENTAL HEALTH

## RODENT CONTROL

IN LEXINGTON-FAYETTE COUNTY



**RODENT ELIMINATION** is not the goal of the Lexington-Fayette County Health Department's Vector Control Program, but rather **RODENT CONTROL**.

The Vector Control program provides educational and consultative services to Fayette County residents about Rodent Control. Staff members may also assist with rat-baiting. The Health Department works year round on prevention activities to reduce rodent habitat.

**MAINTAINING CLEAN COMMUNITIES IS THE BEST PREVENTION TOOL IN THE CONTROL OF RODENTS.**

## WHY IS RODENT CONTROL IMPORTANT?

Rodents damage buildings, chew wiring and cause electrical fires, eat and urinate on human and animal food and serve as carriers for disease. Hantavirus, Human Plague, infectious jaundice, salmonellosis, Rat-bite fever and Trichinosis are illnesses associated with exposure to rodents and rodent habitat.

## YOU CAN HELP PREVENT RODENT INFESTATION

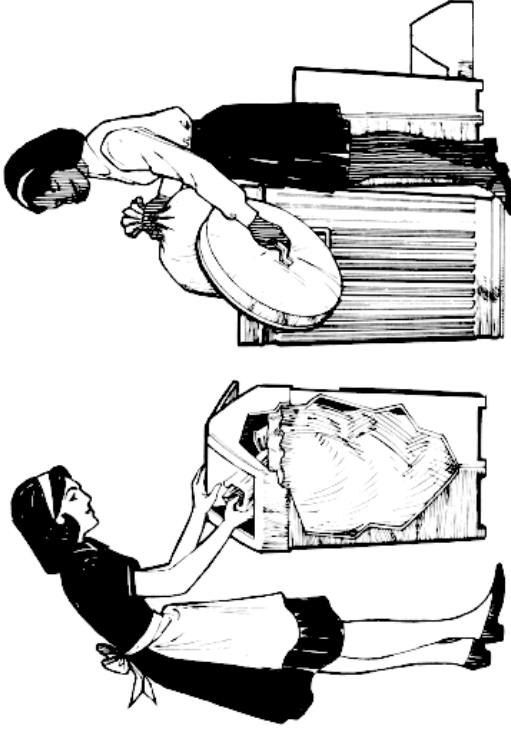
Remove food sources and nesting sites used by rodents:

### OUTSIDE THE HOME

- ◆ Dispose of garbage and trash in thick plastic or metal containers with tight fitting lids.
- ◆ Keep food (including pet food) and water stored in metal or thick plastic containers with tight fitting lids.
- ◆ Dispose of trash and clutter that may serve as rodent nesting sites outside the home weekly.
- ◆ Store wood piles away from your home and elevate at least eight inches off the ground.
- ◆ Avoid contact with rodents and rodent waste.
- ◆ Do not feed wild rodents (squirrels, chipmunks, etc...) or leave pet food in feeding dishes.

### INSIDE THE HOME

- ◆ Store garbage inside your home in metal or thick plastic containers with tight fitting lids.
- ◆ Do not leave dirty dishes for long periods of time.
- ◆ Dispose of food properly to avoid attracting rodents.
- ◆ Use steel wool or cement to seal, screen or otherwise cover all openings into the home 1/4 inch or larger (such as piping, electrical inlets, doors, etc...)
- ◆ Use flea control measures on your pet regularly and do not allow your pet to roam.



The Lexington-Fayette County Health Department provides mouse and rat bait FREE to Fayette County residents for use at their personal residence only. Bait may be picked up at 333 Waller Avenue, Fourth Floor, Monday - Friday 8 - 4:30 p.m.

**BAIT MUST BE USED WITH EXTREME CAUTION AND BE PLACED IN LOCATIONS SAFELY SECURED FROM CHILDREN AND PETS.**

Carefully follow the directions on bait packages. Be sure to use the correct bait for the type of rodent (mouse or rat) that you have.



Droppings  
3/4" Blunt

### Norway Rat



Appearance: Large, Robust  
Average weight: 7-18 ozs.



Droppings  
1/4" Pointed

### House Mouse



Appearance: Small, Slender  
Average weight: .5 oz. - 1 oz.

### IN YOUR YARD

Look for rodent burrows, usually 2-3 inches in diameter. Place two bags of bait in each burrow and cover it with dirt if possible. Re-bait if the hole reopens.

### IN YOUR HOME

Place bait in locations where rodent activity is observed, **but away from food**. You may also try using glue boards and snap traps. Place these in rodent runways between the nests and feeding areas.